

## Features

Low Insertion Loss  
 High Isolation  
 High Power Handling  
 High Return Loss

## Applications

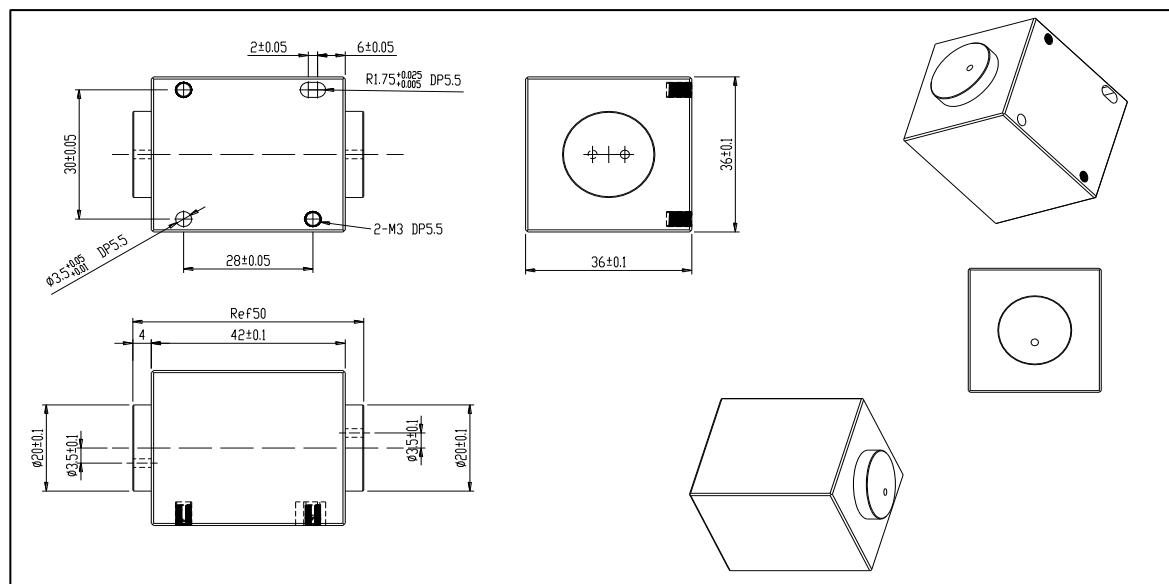
Lasers  
 Test & Measurement Equipments  
 Amplifier  
 Lab Research

## Specifications

Parameters	Unit	Values
Nominal Center Wavelength ( $\lambda_c$ )	nm	1064 $\pm$ 5
Min Isolation @ a pair of collimator ,23°C	dB	35
Min. Isolation at 23°C	dB	25
Typ. Insertion Loss	dB	0.4
Max. Insertion Loss	dB	0.5
Max. Polarization Dependent Loss	dB	0.2
Clear Aperture of Input/Output	mm	2.0
Beam offset of Input/Output	mm	3.5
Min. Return Loss at 1064nm	dB	50
Max. Optical Power (CW, measured @ BD 1.0mm)	W	20 , 50 or Specify
Operating Temperature	°C	'-5 to +50
Storage Temperature	°C	-20 to +70

\*For pulse applications, pls discuss with Aistana.

## Package Dimensions



## Ordering Information

AHPFSI-①①-②②-③③-④

①①: Wavelength

06 - 1064nm

SS - Specify

③③: Handling Power

20 - 20W

50 - 50W

SS - Specify

④: Polarization type

I - Polarization Insensitive

②②: Package Type

C11 - Type C11